



5100



1/2 HP ECONOMY

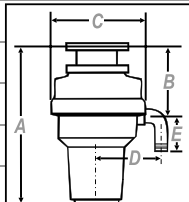


BIO SHIELD (Antimicrobial) for **ODOR PROTECTION!** Disposers are treated with an antimicrobial agent molded inside providing protection against odor causing bacteria growth.



THE TORQUE MASTER GRINDING SYSTEM is a combination of computer designed and balanced components working in unison to provide superior torque grind speed and long system life.

SPECIFICATIONS	MODEL #5100
HORSEPOWER	1/2 HP
MOTOR SPEED RPM	2600 RPM
VOLTAGE	120v
AMPS	2.5
CYCLES	50/60
MOTOR TYPE	Permanent Magnet
SPLASH GUARD	PVC
DRAIN OUTLET	Polycarbonate 940
GRIND RING	Cold Rolled Steel
SWIVEL IMPELLERS	Stainless Steel
BALANCED TURNTABLE	Cold Rolled Steel
BALANCED ARMATURE SHAFT	Stainless Steel
HOPPER	Polycarbonate 940
DRAIN HOUSING	Phenolic EA-5551J
APPLIANCE PROTECTOR	Manual Reset
SINK FLANGE	Polycarbonate 940
STOPPER	ABS
BEARINGS	Permanently Lubricated, Sleeve Type
SOUND SHELL	None
INDIVIDUAL SHIPPING WEIGHT	8.8 lb
MASTER CARTON WEIGHT (4 UNITS)	39 lb
MEASUREMENT A	14"
MEASUREMENT B	6.5"
MEASUREMENT C	4.8"
MEASUREMENT D	5.5"
MEASUREMENT E	3.9"



MASTER EDITION

- Easy and Fast to Install**
COMMODORE disposers feature Speed Master Mounting, an exclusive system that provides fast and economical installation.
- Permanent Magnet Motors**
COMMODORE motors offer maximum torque instantly with the power to cut through potential jams.
- Compact and Lightweight**
The compact design of your COMMODORE allows inclusion where limited under counter space is available.
- Removable Splash Guard**
All COMMODORE models have a removable splash guard, ideal for easy cleaning and replacement.

