



# Specifications

## 1/3 HP - JWD-30

### Builder

### Disposer Description:

2400 RPM | 5-Year Warranty

- 3-Bolt Mount System for Easy Installation
- All Stainless Steel Grinding Components
- Compact Design
- High Torque Balanced Grinding System
- Antimicrobial Agent for Odor Protection
- Full Sound Shell
- Removable Splash Guard
- Attached Power Cord
- Lifetime Corrosion Failure Warranty



**BIO SHIELD®** Antimicrobial for **ODOR PROTECTION!**



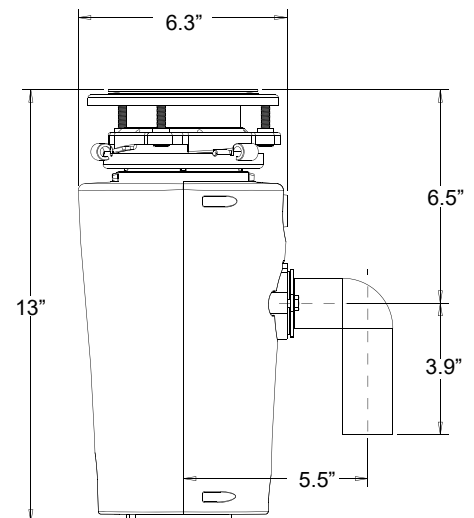
**TORQUE MASTER®**  
Balanced Grinding System:



### Specification Detail:

HORSEPOWER	1/3 HP
MOTOR SPEED RPM	2400 RPM
VOLTAGE	120 VAC
AMPS	3 A
CYCLES	60 Hz
BEARINGS	Permanently Lubricated, Sleeve-Type
MOTOR TYPE	DC, Permanent Magnet
SPLASH GUARD	Removable
GRIND RING	Stainless Steel
SWIVEL IMPELLERS	Stamped Stainless Steel
BALANCED TURNTABLE	Stainless Steel
BALANCED ARMATURE SHAFT	Yes
HOPPER	Corrosion Proof- Glass-Filled Polyester Nylon (PA66)
DRAIN HOUSING	Corrosion Proof - Phenolic
APPLIANCE PROTECTOR	Manual Reset
SOUND-DAMPENING SHELL	Yes
HARDWARE INCLUDED	Stopper and Drain Elbow Kit
SINK FLANGE	Stainless Steel
MOUNT ASSEMBLY	3-Bolt
HOPPER CAPACITY	29 oz.
POWER CORD LENGTH	34"
UNIT WEIGHT	8.8 lbs.

### Dimensions:



FOR MORE INFORMATION CALL: 1- 888-856-6322 (Toll-Free)

M-F 8:00am-5:00pm PST English & Spanish



# Specifications

## 1/2 HP - JWD-50

### Standard

### Disposer Description:

2600 RPM | 6-Year Warranty

- 3-Bolt Mount System for Easy Installation
- All Stainless Steel Grinding Components
- Compact Design
- High Torque Balanced Grinding System
- Antimicrobial Agent for Odor Protection
- Full Sound Shell
- Removable Splash Guard
- Attached Power Cord
- Lifetime Corrosion Failure Warranty



**BIO SHIELD®** Antimicrobial for **ODOR PROTECTION!**



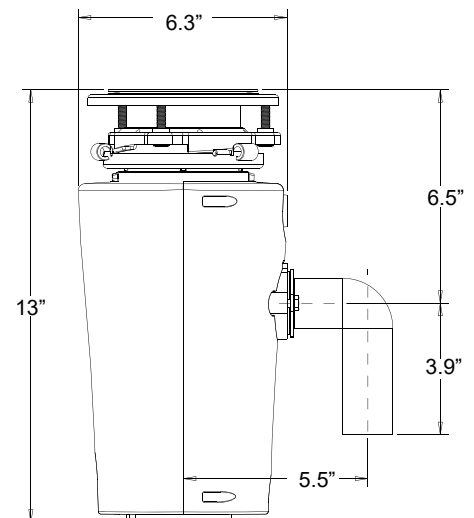
**TORQUE MASTER®**  
Balanced Grinding System:



### Specification Detail:

HORSEPOWER	1/2 HP
MOTOR SPEED RPM	2600 RPM
VOLTAGE	120 VAC
AMPS	4.5 A
CYCLES	60 Hz
BEARINGS	Permanently Lubricated, Sleeve-Type
MOTOR TYPE	DC, Permanent Magnet
SPLASH GUARD	Removable
GRIND RING	Stainless Steel
SWIVEL IMPELLERS	Stamped Stainless Steel
BALANCED TURNTABLE	Stainless Steel
BALANCED ARMATURE SHAFT	Yes
HOPPER	Corrosion Proof- Glass-Filled Polyester Nylon (PA66)
DRAIN HOUSING	Corrosion Proof - Phenolic
APPLIANCE PROTECTOR	Manual Reset
SOUND-DAMPENING SHELL	Yes
HARDWARE INCLUDED	Stopper and Drain Elbow Kit
SINK FLANGE	Stainless Steel
MOUNT ASSEMBLY	3-Bolt
HOPPER CAPACITY	29 oz.
POWER CORD LENGTH	34"
UNIT WEIGHT	9.4 lbs.

### Dimensions:



FOR MORE INFORMATION CALL: 1- 888-856-6322 (Toll-Free)

M-F 8:00am-5:00pm PST English & Spanish



# Specifications

## Disposer Description:



**BIO SHIELD®** Antimicrobial for **ODOR PROTECTION!**



**TORQUE MASTER®** Balanced Grinding System:



**Silver Guard®** Magnetic disposer protection

### 2700 RPM | 10-Year Warranty

- 3-Bolt Mount System for Easy Installation
- All Stainless Steel Grinding Components
- Compact Design
- High Torque Balanced Grinding System
- Antimicrobial Agent for Odor Protection
- Full Sound Shell
- Removable Splash Guard
- Attached Power Cord
- Lifetime Corrosion Failure Warranty

## 3/4 HP - JWD-90-SL

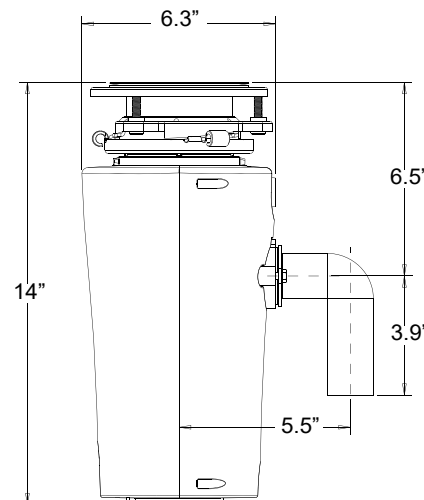
### Slim-Line®



## Specification Detail:

HORSEPOWER	3/4 HP
MOTOR SPEED RPM	2700 RPM
VOLTAGE	120 VAC
AMPS	6 A
CYCLES	60 Hz
BEARINGS	Permanently Lubricated, Sleeve-Type
MOTOR TYPE	DC, Permanent Magnet
SPLASH GUARD	Removable
GRIND RING	Stainless Steel
SWIVEL IMPELLERS	Stamped Stainless Steel
BALANCED TURNTABLE	Stainless Steel
BALANCED ARMATURE SHAFT	Yes
HOPPER	Corrosion Proof- Glass-Filled Polyester Nylon (PA66)
DRAIN HOUSING	Corrosion Proof - Phenolic
APPLIANCE PROTECTOR	Manual Reset
SOUND-DAMPENING SHELL	Yes
HARDWARE INCLUDED	Stopper and Drain Elbow Kit
SINK FLANGE	Stainless Steel
MOUNT ASSEMBLY	3-Bolt
HOPPER CAPACITY	29 oz.
POWER CORD LENGTH	34"
UNIT WEIGHT	11 lbs.

## Dimensions:



FOR MORE INFORMATION CALL: 1- 888-856-6322 (Toll-Free)

M-F 8:00am-5:00pm PST English & Spanish



# Specifications

## 1/2 HP - JWD-70

### Heavy-Duty

### Disposer Description:

2600 RPM | 8-Year Warranty

- 3-Bolt Mount System for Easy Installation
- All Stainless Steel Grinding Components
- High Torque Balanced Grinding System
- Antimicrobial Agent for Odor Protection
- Fully Insulated Sound Shell
- Removable Splash Guard
- Attached Power Cord
- Lifetime Corrosion Failure Warranty



**BIO SHIELD**® Antimicrobial for **ODOR PROTECTION!**



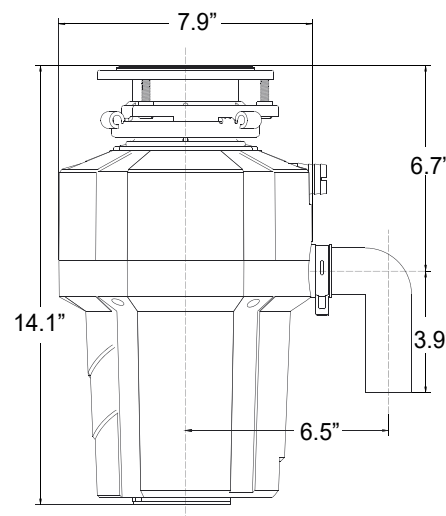
**TORQUE MASTER**®  
Balanced Grinding System:



### Specification Detail:

HORSEPOWER	1/2 HP
MOTOR SPEED RPM	2600 RPM
VOLTAGE	120 VAC
AMPS	4.5 A
CYCLES	60 Hz
BEARINGS	Permanently Lubricated, Sleeve-Type
MOTOR TYPE	DC, Permanent Magnet
SPLASH GUARD	Removable
GRIND RING	Stainless Steel
SWIVEL IMPELLERS	Cast Stainless Steel
BALANCED TURNTABLE	Stainless Steel
BALANCED ARMATURE SHAFT	Yes
HOPPER	Corrosion Proof- Glass-Filled Polyester Nylon (PA66)
DRAIN HOUSING	Corrosion Proof - Phenolic
APPLIANCE PROTECTOR	Manual Reset
SOUND-DAMPENING SHELL	Yes
HARDWARE INCLUDED	Stopper and Drain Elbow Kit
SINK FLANGE	Stainless Steel
MOUNT ASSEMBLY	3-Bolt
HOPPER CAPACITY	36 oz.
POWER CORD LENGTH	34"
UNIT WEIGHT	12 lbs.

### Dimensions:



FOR MORE INFORMATION CALL: 1- 888-856-6322 (Toll-Free)

M-F 8:00am-5:00pm PST English & Spanish



# Specifications

## 3/4 HP - JWD-90

### Deluxe

### Disposer Description:



**BIO SHIELD®** Antimicrobial for **ODOR PROTECTION!**

#### 2700 RPM | 10-Year Warranty

- 3-Bolt Mount System for Easy Installation
- All Stainless Steel Grinding Components
- High Torque Balanced Grinding System
- Antimicrobial Agent for Odor Protection
- Fully Insulated Sound Shell
- Removable Splash Guard
- Attached Power Cord
- Lifetime Corrosion Failure Warranty



**TORQUE MASTER®**  
Balanced Grinding System:



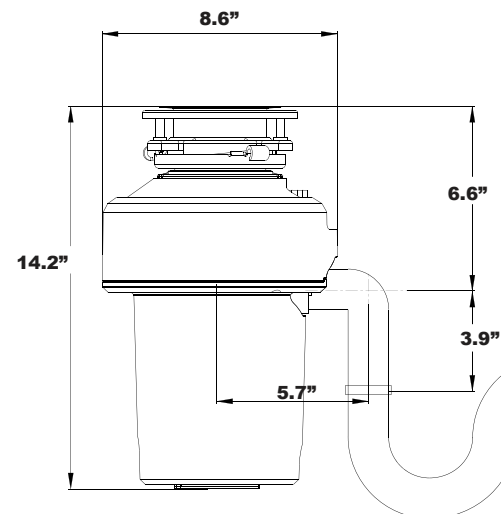
**Silver Guard®**  
Magnetic disposer protection



### Specification Detail:

HORSEPOWER	3/4 HP
MOTOR SPEED RPM	2700 RPM
VOLTAGE	120 VAC
AMPS	6 A
CYCLES	60 Hz
BEARINGS	Permanently Lubricated, Sleeve-Type
MOTOR TYPE	DC, Permanent Magnet
SPLASH GUARD	Removable
GRIND RING	Stainless Steel
SWIVEL IMPELLERS	Cast Stainless Steel
BALANCED TURNTABLE	Stainless Steel
BALANCED ARMATURE SHAFT	Yes
HOPPER	Corrosion Proof- Glass-Filled Polyester Nylon (PA66)
DRAIN HOUSING	Corrosion Proof - Phenolic
APPLIANCE PROTECTOR	Manual Reset
SOUND-DAMPENING SHELL	Full - Insulated
HARDWARE INCLUDED	Stopper and Drain Elbow Kit
SINK FLANGE	Stainless Steel
MOUNT ASSEMBLY	3-Bolt
HOPPER CAPACITY	36 oz.
POWER CORD LENGTH	34"
UNIT WEIGHT	12 lbs.

### Dimensions:



FOR MORE INFORMATION CALL: 1- 888-856-6322 (Toll-Free)

M-F 8:00am-5:00pm PST English & Spanish



# Specifications

## Disposer Description:



**BIO SHIELD®** Antimicrobial for **ODOR PROTECTION!**

### 2800 RPM | 12-Year Warranty

- 3-Bolt Mount System for Easy Installation
- All Stainless Steel Grinding Components
- High Torque Balanced Grinding System
- Antimicrobial Agent for Odor Protection
- Fully Insulated Sound Shell
- Removable Splash Guard
- Attached Power Cord
- Lifetime Corrosion Failure Warranty



**TORQUE MASTER®**  
Balanced Grinding System:



**Silver Guard®**  
Magnetic disposer protection

## 1¼ HP - JWD-125

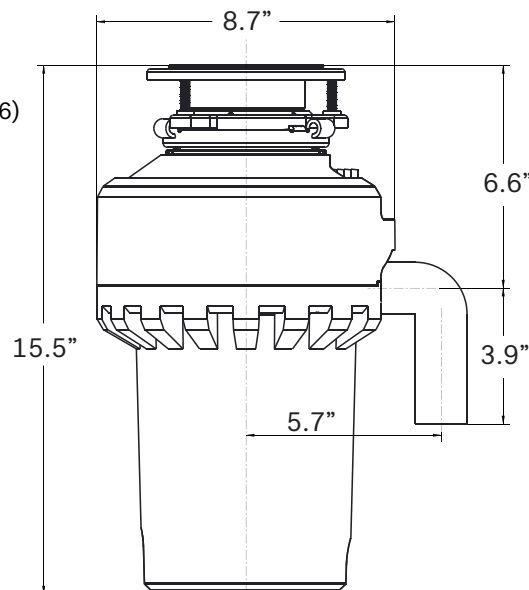
### Highest Torque

## Specification Detail:

HORSEPOWER	1¼ HP
MOTOR SPEED RPM	2800 RPM
VOLTAGE	120 VAC
AMPS	7.5 A
CYCLES	60 Hz
BEARINGS	Permanently Lubricated, Sleeve-Type
MOTOR TYPE	DC, Permanent Magnet
SPLASH GUARD	Removable
GRIND RING	Stainless Steel
SWIVEL IMPELLERS	Cast Stainless Steel
BALANCED TURNTABLE	Stainless Steel
BALANCED ARMATURE SHAFT	Yes
HOPPER	Corrosion Proof- Glass-Filled Polyester Nylon (PA66)
DRAIN HOUSING	Corrosion Proof - Phenolic
APPLIANCE PROTECTOR	Manual Reset
SOUND-DAMPENING SHELL	Full - Insulated
HARDWARE INCLUDED	Stopper and Drain Elbow Kit
SINK FLANGE	Stainless Steel
MOUNT ASSEMBLY	3-Bolt
HOPPER CAPACITY	36 oz.
POWER CORD LENGTH	34"
UNIT WEIGHT	13.9 lbs.



## Dimensions:



FOR MORE INFORMATION CALL: 1- 888-856-6322 (Toll-Free)

M-F 8:00am-5:00pm PST English & Spanish